

# ETUI services in support of European worker representatives

## **European Trade Union Institute**

**Supporting, reinforcing  
and stimulating the European  
trade union movement**

**European governance** **Austerity**  
**Employment** **European Works Councils**  
**Worker participation** **Social dialogue**  
**Collective bargaining** **Wages** **Gender perspective**  
**Working conditions** **Health and safety**  
**Job quality** **Sustainable development**  
**Trade union renewal**

the European Trade Union Institute

**etui.**

**european trade union institute**

**« to support, strengthen and stimulate  
the European trade union movement »**

- founded in 2005 by merger of ETUI, ETUCO & TUTB
- independent research- and education centre
- cooperation with universities and several networks

## ETUI : 2 departments

+ communication/publication, IT, finance,  
documentation centre

**Maria Jepsen**



**Philippe Pochet**  
**general director**



## Research

examines socio-economic issues and labour relations,  
link with the academic world, research on subjects of  
strategic importance for the world of work

### 3 units

**unit 1 : Europeanisation of Industrial Relations**

unit 2 : Economic, Employment and Social Policies

unit 3 : Working Conditions, Health & Safety

# ETUI services

- **ETUI RESEARCH**  
**unit 1 : Europeanisation  
of Industrial Relations**

**Aline Hoffmann**  
head of unit 1



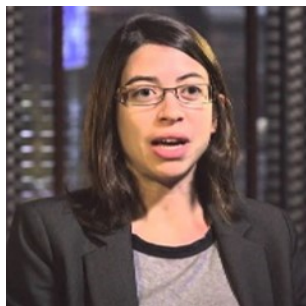
legal experts



unions policies



wp.eu



BLER/SE



worker  
representation



corporate  
governance



ewcdb.eu

**etui.**

- **EWPCC : the European Worker Participation Competence Centre**
  - founded in 2008
  - part of the ETUI
  - support of European workers' representatives (expertise, training, publications...)
  - financed by the (partial) transfer of remuneration of board-level employee representatives in European Companies (SE)



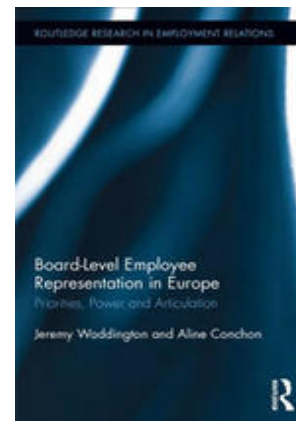
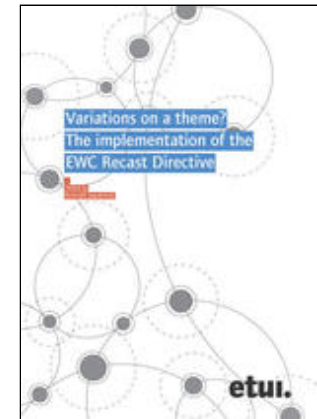
Aline Hoffmann  
coordinator

Cathérine Rihoux  
assistant



## • EWPPCC initiatives

- annual conference  
2-3 November 2016 “internationalisation of boards”
- most recent publications



The screenshot shows the homepage of the ETUI website. At the top, there is a navigation bar with 'etui web sites' and a dropdown menu, followed by 'Contact', 'Sitemap', and language options 'EN | DE | FR'. A search bar is also present. Below this is the main header with the title 'worker-participation.eu' and the subtitle 'the gateway to information on worker participation issues in europe'. To the right, it says 'a service of the etui.'. A secondary navigation bar lists various topics: 'About WP', 'National Industrial Relations', 'European Works Councils', 'European Company (SE)', 'Company Law and CG', 'EU Framework for I-C-P', and 'EU Social Dialogue'. The main content area is divided into three columns. The left column, titled 'ABOUT WP', contains a list of links: 'What's new?', 'Why Worker Participation?', 'European WP Competence Centre', 'European Participation Index (EPI)', 'Scenarios 2030', 'Publications', 'Links', and 'Legal texts'. The middle column, titled 'WELCOME TO WORKER-PARTICIPATION.EU', features a 'HIGHLIGHTS' section with several items: a new book by the ETUI, 'Adoption of law to reform industrial relations in France', a policy brief on transnational flexibility, 'Benchmarking Working Europe 2015', a conference paper on fundamental rights, a policy brief on enforcement provisions, an annual conference summary, a policy brief on working in multinationals, a policy brief on collective labour law, and a section on health, safety and risk prevention. The right column, titled 'FURTHER ETUI RESOURCES:', includes social media icons, a link to 'ecdb.worker-participation.eu', the 'European Company (SE) Database', the 'SE Europe' research network, the 'www.ecdb.eu' database, the 'European Works Council Database', the 'News Bulletin worker-participation.eu' newsletter, and the 'labourline' documentation centre.



the etui's european company (SE) database

home | about ETUI | faq | contact | worker-participation.eu | Explanatory notes

## EUROPEAN COMPANY (SE) DATABASE - ECDB

The ECDB provided by the ETUI offers key information on both established SEs and companies planning to adopt SE status. A specific focus of interest is the aspect of worker involvement within these SEs. A factsheet is available for each planned or already established SE and the database is updated regularly.

The ECDB aims to provide information on the use of the SE statute and to monitor implementation of the SE Directive in the area of worker involvement where the Directive contains provision for a legally binding procedure of negotiations on worker information, consultation and participation. The number of SEs has been increasing continuously since the SE legislation came into force. The ECDB delivers key data to facilitate observation and analysis of developments in this rather new but dynamic field of European company law and European industrial relations. Since 2005 the ETUI has been regularly issuing information on registered SEs. The information is compiled by the ETUI's ECDB team under co-ordination of Anders Carlson, Aline Hoffmann with support of the [SEEurope research network](#).

### Use of the SE Factsheets

Registration for access to the ECDB is free of charge. You can register [here](#). The ECDB is a not-for profit service of the ETUI. The collection and compilation of data requires significant resources. For this reason a subscription is required for access to the advanced functions of the ECDB.

Information and documents from this website may be reproduced for non-commercial purposes only and provided the source is acknowledged. The ETUI accepts no liability for information posted on this site. We attempt to ensure, but do not guarantee, that data is up-to-date and accurate ([Disclaimer](#)).

Should you find the information to be inadequate, or if you have additional information, we would be pleased if you share your information with us to help us improve our service ([Feedback](#)).

If you use information from the ECDB please mention the following source: ETUI (2014), European Company (SE) Database, <http://ecdb.worker-participation.eu/>

**Established SEs**

# 2488

11 Feb 2016

**Log in**

Email\*

Password\*

If you do not have an account yet, you can [register here for free](#)

**Visit Also:**

[www.ecdb.eu](http://www.ecdb.eu)  
the database on european works council agreements

The database on European Works Council Agreements

### SE Companies

**News**

- > [News](#)
- > [Newsletter](#)
- > [New/Updated Factsheets](#)

**Overview**

- > [Established SEs](#)
- > [Planned SEs](#)
- > [Archive](#)

**Factsheets**

- > [Established SEs](#)
- > [Planned SEs](#)
- > [Other SEs](#)

**Search**

- > [Basic search](#)
- > [Advanced search](#)

**Subscription**

- > [Register](#)
- > [Subscribe](#)
- > [Log in](#)

Share your information with us to make us improve our service:  
[Submit feedback](#)

 **PRINTER FRIENDLY VERSION**



etui web sites ▼ Contact [EN](#) | [DE](#) | [FR](#) LOGIN

**ewcdb**  
The european works councils database

a service of the **etui.**

[SEARCH](#) [STATS & GRAPHS](#) [LEGISLATION](#) [USEFUL LINKS](#) [NEWS](#) [GLOSSARY](#) [ABOUT EWCD](#)

## WELCOME TO THE NEW EWC DATABASE

Now you have free full access to our analysis of agreements, extended search functions, charts production tools, etc.

SEARCH DATABASE

# labourline

the on-line catalogue of the etui documentation centre

# etui.

Home Login

### Quick search

### Search

Basic Search  
Guided Search

### New acquisitions

Articles  
e-Articles  
Books  
e-Books  
Book chapters

### Periodicals


Issues received in  
August 2015  
July 2015  
April - June 2015  
January - March 2015

Archives  
2014  
2013

## Labourline

Labourline is the on-line catalogue of the documentation centre of the European Trade Union Institute - **ETUI**. Labourline contains more than **63,500** references in both printed and electronic format related to the world of labour.


### New books




### Topics

- EU institutional development
- Economic trends & policies
- Health & safety
- Labour market, employment & social policy
- Social dialogue and collective bargaining
- Sustainable development
- Trade union renewal and mobilisation
- Workers participation

### Network membership



## Refit



With REFIT or 'Regulatory Fitness and Performance Programme', the EU entire acquis communautaire will be assessed to address administrative and regulatory burdens. To better understand what REFIT is all about and get an alternative to the narrative of the European Commission on Better Regulation and REFIT, you will find the main official EU documents and a range of analysis carried out on the REFIT and related issues.  
[Read more.](#)

- **ETUI : Education**

coordinates training courses for European trade union officers and representatives



Andrea Husen-Bradley  
contact for European Works  
Councils and European  
federations



Valerica Dumitrescu  
project management  
and budget lines



Gabriela Portela  
training for and support  
of Eurotrainers and  
language training



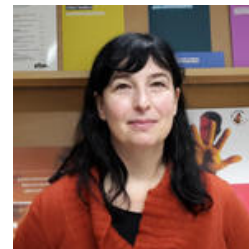
**Ulisses Garrido**



Bruno Demaître  
European Works Councils  
SE WC, SNB



Ilaria Costantini  
training for young  
trade union leaders



Luciole Sauviat  
thematic training

## • EWC/SNB/SE RB training team

Andrea Husen-Bradley  
coordination of trainings  
contacts with companies  
and European trade union  
federations



Bruno Demaître  
pedagogical coordination  
European and national trade  
union federations and ETUI  
work programme

**the** **NET**

external  
trainers



experts



Gabriela Portela  
languages  
French/English



Lut Coremans

Elisa Santaniello

administration and practical organisation

# ETUI services

- **target groups**
- **1101 European Works Councils**
- **Special Negotiating Bodies**  
(currently ~50)
- **Representative Bodies in 128 SEs**
- **BLER in 65 SE boards**
- **support for ETUF/local TU initiatives**



- **training methods and principles**
  - made-to-measure
  - interactive
  - inclusive
  - trade union inspired
  - delivered by experienced trainers
  - quality service for a fair price
  - modular pathways

## • programme 2016-2017

- « open » seminars
  - 2-4/05/2016: coordination of EWCs in the Commerce sector in cooperation with UNI Europa in Florence, Italy
  - 7-9/09/2016: the practice of SE WC/EWC for new members in Warsaw, Poland
  - 3-5/10/2016: the coordination of SE WC/EWC for local trade union officers in Bratislava, Slovakia
  - 30/11–2/12/2016: occupational health & safety in Bilbao, Spain
- development of on line courses  
EWC legislation, worker representation
- annual training for board level representatives
- development of a training module on financial information



# ETUI services

## • website

etui web sites ▾

### ewc training

taiilor-made trainings for your EWC, SE works council and SNB

a service of the **etui.**

training offers ▾ right to training what's new about us ▾ contact us

Search

The ETUI's education department offers tailor-made training for European Works Councils, Special Negotiation Bodies (SNB), and SE Works Councils.

**Latest EWC resources**

News

- [Annual EWPC Conference 2015](#)
- [New ETUI book on implementation of the EWC Recast Directive](#)

[More News](#)



## contact

**Bruno Demaître**

**bdemaitre@etui.org**

**+32 476 54 09 90**

**Andrea Husen-Bradley**

**ahusen@etui.org**

**+32 2 224 05 18**

**ewctraining@etui.org**



**flyer for download**

<http://www.etui.org/Training/Our-leaflets>

